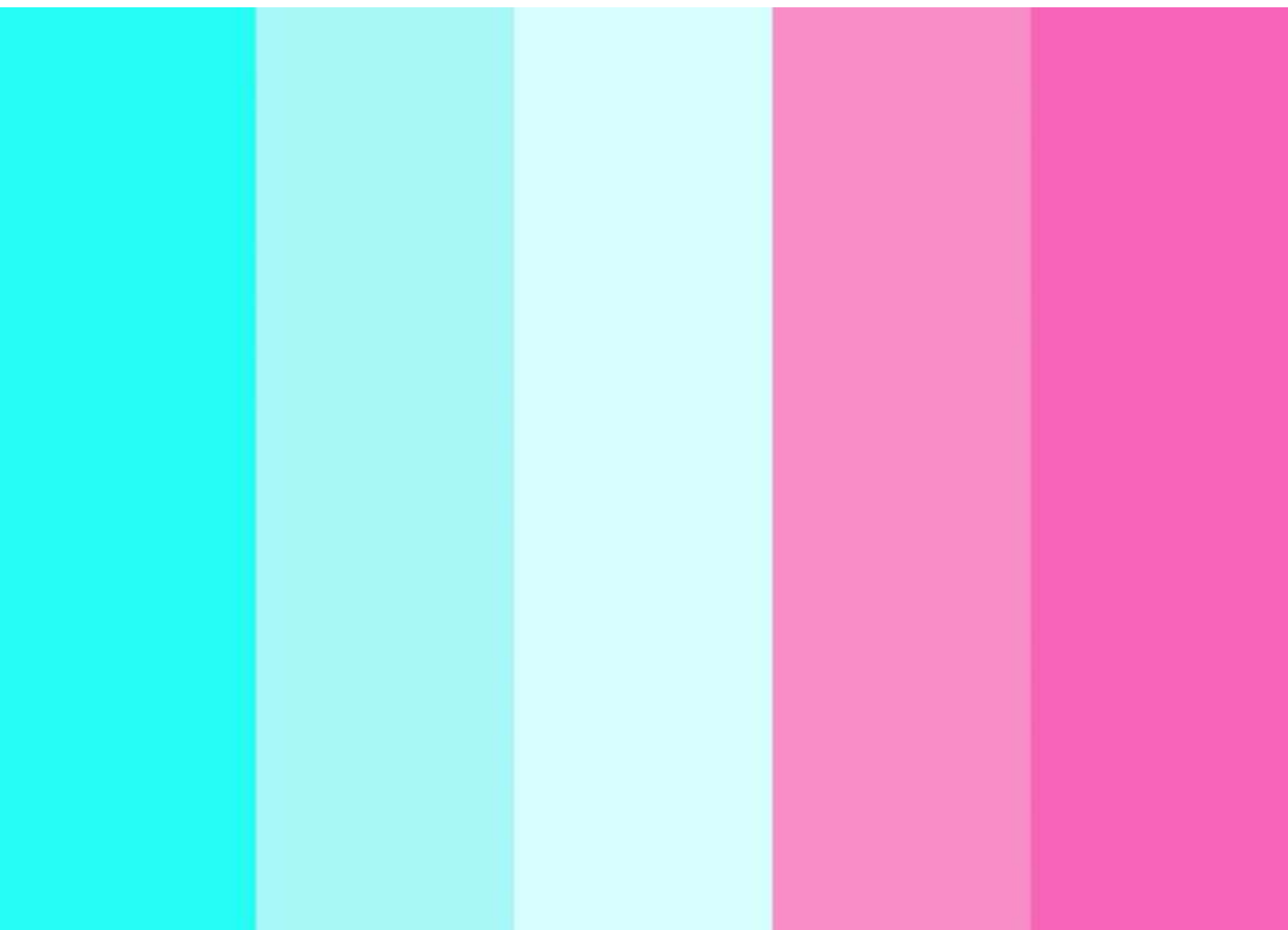


USA Retail Price List

Benches Collection

April 2024



Contents

Biscayne	Page 3
Carlson	Page 4
Carlyle	Page 5
Dario Part 1	Page 6
Dario Part 2	Page 7
Element	Page 8
Fremont	Page 9
Manhattan Benches - High Back	Page 10
Manhattan Benches - Low Back	Page 11
Manhattan Benches - No Back	Page 12
Manhattan Pouf	Page 13
Monarch Part 1	Page 14
Monarch Part 2	Page 15
Monarch Part 3	Page 16
Monarch Part 4	Page 17
Monarch Part 5	Page 18
Republic	Page 19
Subway	Page 20
Vestry Counter Height	Page 21
Vestry Bar Height	Page 22

Biscayne

Biscayne Collection Of Small And Large Ottomans / Indoor Only /
Moulded Polyurethane Shell / On Glides / Light Weight Design /
Fully Upholstered / Upcharge For Writing Table / Upcharge For
Wireless Charger In Writing Table / Ideal For Breakout Areas,
Universities, Hotels And Lobby Areas.



Style	DIM	Code	1+COM	2	3	4	5	6	7	L2	COM
Small	Height 19 Dia 29	BISC1	\$1827	\$1856	\$1887	\$1908	\$1951	\$2085	\$2320	\$2665	2.5 Yards
Medium	Height 18 Dia 42	BISC5	\$3140	\$3285	\$3430	\$3570	\$3861	\$4145	\$4429	\$4060	5 Yards
Large	Height 19 Dia 50	BISC2	\$4192	\$4213	\$4320	\$4505	\$4635	\$4871	\$5137	\$6419	6 Yards
Round Table	Height 25 Dia 17	BISC3	\$1750								
Power And Data		BISC4	\$685								

Standard and Upcharge Features

Moulded Polyurethane Shell	Fully Upholstered
Indoor Use Only	Round Matching Table Black Or White Standard
On Glides	Other Table Painted Colour Finishes Available
Two Tone Upholstery + \$50 List	Power And Data + \$685 List

Carlson

Carlson Matching Table And Benches / Can Be Purchased Individually / Metal Under Frame On Table And Bench For Heavy Contract Use / Metal Frame Powder Coated In White Or Dark Brown Standard / Solid Wood Veneered Top In Natural Oak Or Burnished Oak / Square Edge Profile Top / Ideal For Hospitality Venues, Coffee Shops, Boutique Hotels And Collaboration Areas.



Style	DIM	Code	Price
Bench	Height 18 Width 92 Depth 16	CARLS1	\$5235
Table	Height 30 Width 96 Depth 46	CARLS2	\$9815

Standard and Upcharge Features

Metal Steel Frame Braced For Contract Use	Powder Coated Frame In White Or Dark Brown
Natural Oak Or Burnished Oak Finishes Only	Heavy Duty Table Top And Bench Top
Squre Edge Profile Top	

Carlyle

Carlyle One And Two Seater Benches / Fully Upholstered Round Seat In A Wide Choice Of Fabric Options / Steel Legs With Textured Black Finish Only / Ash Wooden Side Table Standard / Upcharge For Various Wood Stain Finishes / Upcharge For Textured Metal Tray Side Table / Upcharge For Gold Metal Side Table / Ideal For Lobby Areas, Educational Environments, Waiting Rooms, Hospitality Venues And Conference Spaces.



Style	DIM	Code	1+COM	2	3	4	5	6	7	L2	COM
One Seater Bench	Height 18 Width 36 Depth 17 Seat H 18	CARLY1			\$2853	\$3330	\$3438	\$3543	\$3759	\$3975	1.9 Yards
Two Seater Bench	Height 18 Width 63 Depth 17 Seat H 18	CARLY2			\$3806	\$4441	\$4584	\$4727	\$5014	\$5301	3.5 Yards

Standard and Upcharge Features

Textured Black Painted Legs Only	Ash Wood Side Table Standard
Well Padded Seat	Fully Upholstered
On Glides	Fully Welded Frame
Additional Side Table Wood Stain Finishes + \$54 List	Gold Metal Side Table + \$145 List Each
Black Metal Side Table + \$50 List Each	

Dario Part 1

Dario Bench / With Or Without Back / Open Ended Benches / Available in 3 Straight Widths Including Corner and External Corner Units / Can Fit Easily Side By Side For Limitless Configurations To Suit Space / Sprung Seat / Well Padded Foam / Fully Upholstered / Upcharge For Quilted Effect Back / Upcharge For Two Tone Upholstery / Metal Round Polished Legs Standard / Ideal For All Lobby Areas, Educational Environments, Airport Lounge Areas and Retail Environments



Style	DIM	Code	1+COM	2	3	4	5	6	7	COM
One Seater Bench With Back	Height 32 Width 24 Depth 28 Seat H 18	DARI1	\$2965	\$3050	\$3145	\$3255	\$3545	\$4005	\$4460	TBC
Two Seater Bench With Back	Height 32 Width 48 Depth 28 Seat H 18	DARI2	\$4847	\$5001	\$5154	\$5306	\$5460	\$5612	\$5766	TBC
Three Seater Bench With Back	Height 32 Width 71 Depth 28 Seat H 18	DARI3	\$6710	\$6928	\$7145	\$7360	\$7580	\$7801	\$8017	TBC
Corner Unit	Height 32 Width 30 Depth 30 Seat H 18	DARI4	\$4842	\$5001	\$5154	\$4306	\$5460	\$5612	\$5766	TBC

Standard and Upcharge Features

Timber Frame Construction	Well Padded Seat And Back
Polished Chrome Metal Legs	Fully Upholstered
Two Tone Upholstery + \$50 List	Quilted Stitching One Seater + \$250
Quilted Stitching Two Seater + \$350	Quilted Stitching Three Seater + \$400
Quilted Stitching Corner Unit + \$350	

Dario Part 2

Dario Bench / With Or Without Back / Open Ended Benches / Available in 3 Straight Widths Including Corner and External Corner Units / Can Fit Easily Side By Side For Limitless Configurations To Suit Space / Sprung Seat / Well Padded Foam / Fully Upholstered / Upcharge For Quilted Effect Back / Upcharge For Two Tone Upholstery / Metal Round Polished Legs Standard / Ideal For All Lobby Areas, Educational Environments, Airport Lounge Areas and Retail Environments



Style	DIM	Code	1+COM	2	3	4	5	6	7	COM
One Seater Bench No Back	Height 18 Width 24 Depth 28 Seat H 18	DARI5	\$1840	\$1895	\$1955	\$2020	\$2120	\$2240	\$2470	TBC
Two Seater Bench No Back	Height 18 Width 48 Depth 28 Seat H 18	DARI6	\$3890	\$4075	\$4175	\$4355	\$4665	\$4750	\$5001	TBC
Three Seater Bench No Back	Height 18 Width 71 Depth 28 Seat H 18	DARI7	\$5195	\$5365	\$5555	\$5780	\$6090	\$6275	\$6595	TBC

Standard and Upcharge Features

Timber Frame Construction	Well Padded Seat And Back
Polished Chrome Metal Legs	Fully Upholstered
Two Tone Upholstery + \$50 List	

Element

The Elements Simple Geometric Squares And Rectangles Have Had Their Edges Rounded To Give A More Welcoming Feel / The Family Of Products Comprises Of Three Poufs / Upcharge For Wooden Tray Is In Slatted Oak With A Choice Of Stains / The Feet Are Available In Graphite Or An Upcharge For Copper / Fully Upholstered / Ideal For Restaurants, Corporate Areas And Hospitality Venues.



Style	DIM	Code	1+COM	2	3	4	5	6	7	L2	COM
Square Pouf	Height 16 Width 18 Depth 18 Seat H 16	ELN1	\$1985	\$2020	\$2072	\$2155	\$2337	\$2533	\$2733	\$3130	1.2 Yards
Rectan-gular Pouf	Height 16 Width 37 Depth 18 Seat H 16	ELN2	\$3970	\$4056	\$4144	\$4310	\$4666	\$5014	\$5360	\$6220	2.2 Yards
Writing Tablet Oak Standard		ELN3	\$899								

Standard and Upcharge Features

Moulded Polyurethane Shell	Fully Upholstered
Round Tubular Legs	On Nylon Glides
Copper Or Graphite Finish	
Two Tone Upholstery + \$50 List	Copper Legs + \$150 List

Fremont

Fremont Is A Collection Of Small And Large Ottomans In Soft Shapes / Used Indoor And Outdoor / Moulded Polyurethane / On Glides / Light Weight Design / Fully Upholstered / Ideal For Breakout Areas, Universities, Hotels And Lobby Areas



Style	DIM	Code	1+COM	2	3	4	5	6	7	L2	COM
Small Pouf	Height 20 Dia 18	FR1	\$1410	\$1496	\$1571	\$1643	\$1753	\$1865	\$2024	\$2204	1.9 Yards
Medium Pouf	Height 17 Dia 19	FR2	\$1410	\$1496	\$1571	\$1643	\$1753	\$1865	\$2024	\$2204	1.9 Yards
Large Pouf	Height 17 Dia 33	FR3	\$2951	\$3139	\$3300	\$3454	\$3690	\$3930	\$4271	\$4657	2.8 Yards
Extra Large Pouf	Height 17 Dia 51	FR4	\$3605	\$3739	\$3870	\$4001	\$4130	\$4262	\$4592	\$4786	4.4 Yards

Standard and Upcharge Features

Fully Upholstered	Moulded Polyurethane Frame
On Nylon Glides	None Removable Cover
Two Tone Upholstery + \$50 List	

Manhattan Benches - High Back



Manhattan Benches / Available In 3 Widths / With Screen Fixed To Back / Used Singular Stand Alone Or Back To Back With Bench Only / Repeated Configuration Options For Open Space Areas / Timber Frame Construction / Metal Frame Base Painted Black Or White Only / Well Padded Seat / Upcharge USB Socket In Base / Ideal For All Lobby Areas, Car Dealerships And General Waiting

Style	DIM	Code	3+COM	4	5	6	7	COM
Small Bench High Back	Height 57 Width 31 Depth 29 Seat H 17	MAT10	\$5519	\$5629	\$5741	\$5959	\$6184	5.5 Yards
Medium Bench High Back	Height 57 Width 47 Depth 29 Seat H 17	MAT11	\$6137	\$6247	\$6569	\$7223	\$8527	7 Yards
Large Bench High Back	Height 57 Width 63 Depth 29 Seat H 17	MAT12	\$7622	\$7960	\$8391	\$9248	\$10966	10.1 Yards

Standard and Upcharge Features

Timber Frame	Fully Upholstered
Sprung Seat	White And Black Frame Only
Two Tone Upholstery + \$50 List	USB Electrics + \$320 List

Manhattan Benches - Low Back



Manhattan Benches / Available In 3 Widths / With Screen Fixed To Back / Used Singular Stand Alone Or Back To Back With Bench Only / Repeated Configuration Options For Open Space Areas / Timber Frame Construction / Metal Frame Base Painted Black Or White Only / Well Padded Seat / Upcharge USB Socket In Base / Ideal For All Lobby Areas, Car Dealerships And General Waiting Areas.

Style	DIM	Code	3+COM	4	5	6	7	COM
Small Bench Low Back	Height 30 Width 31 Depth 29 Seat H 17	MAT4	\$3412	\$3522	\$3632	\$3852	\$4347	2.4 Yards
Medium Bench Low Back	Height 30 Width 47 Depth 29 Seat H 17	MAT8	\$4378	\$4542	\$4754	\$5781	\$6034	3.2 Yards
Large Bench Low Back	Height 30 Width 63 Depth 29 Seat H 17	MAT9	\$5606	\$5802	\$6156	\$6705	\$7805	4.1 Yards

Standard and Upcharge Features

Timber Frame	Fully Upholstered
Sprung Seat	White And Black Frame Only
Two Tone Upholstery + \$50 List	USB Electrics + \$320 List

Manhattan Benches - No Back



Manhattan Benches / Available In 3 Widths / With Screen Fixed To Back / Used Singular Stand Alone Or Back To Back With Bench Only / Repeated Configuration Options For Open Space Areas / Timber Frame Construction / Metal Frame Base Painted Black Or White Only / Well Padded Seat / Upcharge USB Socket In Base / Ideal For All Lobby Areas, Car Dealerships And General Waiting

Style	DIM	Code	3+COM	4	5	6	7	COM
Small Bench No Back	Height 17 Width 31 Depth 29	MAT1	\$2316	\$2436	\$2557	\$2797	\$3279	2.4 Yards
Medium Bench No Back	Height 17 Width 47 Depth 29	MAT2	\$2175	\$3327	\$3482	\$3792	\$4417	3.2 Yards
Large Bench No Back	Height 17 Width 63 Depth 29	MAT3	\$4026	\$4221	\$4419	\$4810	\$5594	4.1 Yards

Standard and Upcharge Features

Timber Frame	Fully Upholstered
Sprung Seat	White And Black Frame Only
Two Tone Upholstery + \$50 List	USB Electrics + \$320 List

Manhattan Pouf

Manhattan Table Pouf / Available As Square Or Rectangular / Timber Frame Construction / 4 Leg Metal Base / Painted Black Or White Only / Metal Frame Welded For Added Strength / Suitable For Contract Use / Well Padded / Fully Upholstered / Ideal For Lobby Areas, Social Workplace Areas And Educational Environments.



Style	DIM	Code	3+COM	4	5	6	7	COM
Square Pouf	Height 33 Width 20 Depth 22 Seat H 17	MAT6	\$1828	\$1936	\$2043	\$2148	\$2254	1.6 Yards
Rectan-gular Pouf	Height 41 Width 18 Depth 20 Seat H 30	MAT5	\$2632	\$2740	\$2863	\$3018	\$3792	1.8 Yards

Standard and Upcharge Features

Timber Frame	Fully Upholstered
Sprung Seat	White And Black Frame Only
Two Tone Upholstery + \$50 List	

Monarch Part 1

Low Back Straight Units And End Arms



Monarch Low Back Straight Units / With Or Without Sides / 1 Or 2 Seater / Side By Side With Or Without Back To Create Straight Or Curved Internal And External Segments / Internal And External Modules And Combinations To Create Unlimited Layouts / Matching 1 Seater Pyramid Pouf And Metal Rod Tables / Ideal For Hospitality Venues, Lobby Areas And Educational Environments.

Style	DIM	Code	1+COM	2	3	4	5	6	7	COM
1 Seater Low Back Open Ended	Height 29 Width 32 Depth 24 Seat H 17	MONA1	\$2341	\$2430	\$2470	\$2657	\$2739	\$2819	\$2921	4.5 Yards
2 Seater Low Back Open Ended	Height 29 Width 53 Depth 24 Seat H 17	MONA2	\$3796	\$3987	\$4247	\$4505	\$4770	\$5028	\$5288	5.6 Yards
Corner Unit With Low Back	Height 29 Width 24 Depth 24 Seat H 17	MONA3	\$3156	\$3281	\$3413	\$3550	\$3693	\$3839	\$3994	3.7 Yards
Left Hand Arm		MONA4	\$450							1.9 Yards
Right Hand Arm		MONA5	\$450							1.9 Yards

Standard and Upcharge Features

Timber Frame Construction	Sprung Seat
Fully Upholstered	Table - White Frame And White Laminate ONLY
Configured For Various Layouts	Matching 1 Seater Pyramid Pouf - POA
Left / Right Arms Add Price On Per Arm	
Two Tone Upholstery + \$50 List	Work Shelf On 2 Seater With High Back:
USB + \$399 List	White Painted Metal \$1080
USB With Power + \$685 List	

Monarch Part 2

Low Back

30 Degree Internal And External Units

90 Degree Internal And External Units



Style	DIM	Code	1+COM	2	3	4	5	6	7	COM
Internal Unit 30 Degree Low Back	Height 29 Width 34 Depth 25 Seat H 17	MONA6	\$1778	\$1891	\$2017	\$2128	\$2252	\$2380	\$2506	4.2 Yards
External Unit 30 Degree Low Back	Height 29 Width 19 Depth 25 Seat H 17	MONA7	\$1989	\$2101	\$2227	\$2338	\$2466	\$2592	\$2721	4 Yards
Internal 90 Degree Low Back	Height 29 Width 62 Depth 25 Seat H 17	MONA8	\$5957	\$6192	\$6459	\$6791	\$7124	\$7457	\$7791	5.8 Yards
External 90 Degree Low Back	Height 29 Width 23 Depth 25 Seat H 17	MONA9	\$5957	\$6192	\$6459	\$6791	\$7124	\$7457	\$7791	5.8 Yards

Monarch Part 3

High Back Straight Units And End Arms

Monarch High Back Straight Units / With Or Without Sides / 1 Or 2 Seater / Side By Side With Or Without Back To Create Straight Or Curved Internal And External Segments / Internal And External Modules And Combinations To Create Unlimited Layouts / Matching 1 Seater Pyramid Pouf And Metal Rod Tables / Ideal For Hospitality Venues, Lobby Areas And Educational Environments.



Style	DIM	Code	1+COM	2	3	4	5	6	7	COM
1 Seater High Back Open	Height 44 Width 32 Depth 24 Seat H 17	MONA10	\$3370	\$3476	\$3577	\$3747	\$3963	\$4179	\$4396	4 Yards
2 Seater High Back Open	Height 44 Width 53 Depth 24 Seat H 17	MONA11	\$5614	\$5851	\$6089	\$6325	\$6561	\$6947	\$7097	6.9 Yards
Corner Unit With High	Height 44 Width 24 Depth 24 Seat H 17	MONA12	\$5132	\$5329	\$5545	\$5856	\$5999	\$6233	\$6486	4.1 Yards
Left Hand Arm		MONA13	\$900							2.7 Yards
Right Hand Arm		MONA14	\$900							2.7 Yards

Standard and Upcharge Features

Timber Frame Construction	Sprung Seat
Fully Upholstered	Table - White Frame And White Laminate ONLY
Configured For Various Layouts	Matching 1 Seater Pyramid Pouf - POA
Left / Right Arms Add Price On Per Arm	
Two Tone Upholstery + \$50 List	Work Shelf On 2 Seater With High Back:
USB + \$399 List	White Painted Metal \$1080
USB With Power + \$685 List	

Monarch Part 4

High Back

30 Degree Internal And External Units

90 Degree Internal And External Units



Style	DIM	Code	1+COM	2	3	4	5	6	7	COM
Internal Unit 30 Degree High	Height 44 Width 34 Depth 25 Seat H 17	MONA15	\$3504	\$3795	\$3995	\$4185	\$4390	\$4606	\$4820	5 Yards
External Unit 30 Degree High	Height 44 Width 19 Depth 25 Seat H 17	MONA16	\$3818	\$4005	\$4205	\$4395	\$4604	\$4818	\$5035	5 Yards
Internal 90 Degree High Back	Height 44 Width 62 Depth 25 Seat H 17	MONA17	\$7796	\$8136	\$8523	\$9008	\$9494	\$9978	\$10462	9.9 Yards
External 90 Degree High Back	Height 44 Width 23 Depth 25 Seat H 17	MONA18	\$7796	\$8136	\$8523	\$9008	\$9494	\$9978	\$10462	9.9 Yards

Monarch Part 5

Internal And External Segments

Benches And Tables



Style	DIM	Code	1+COM	2	3	4	5	6	7	COM
1 Seater Straight Bench	Height 17 Width 31 Depth 21 Seat H 17	MONA19	\$1869	\$2069	\$2264	\$2460	\$2656	\$2852	\$3045	1.8 Yards
2 Seater Straight Bench	Height 17 Width 53 Depth 21 Seat H 17	MONA20	\$2616	\$2814	\$3010	\$3207	\$3405	\$3598	\$3795	2.5 Yards
30° Curved Bench	Height 17 Width 32 Depth 21 Seat H 17	MONA21	\$1728	\$1842	\$1972	\$2087	\$2220	\$2351	\$2482	1.8 Yards
90° Curved Bench	Height 17 Width 56 Depth 21 Seat H 17	MONA22	\$2357	\$2470	\$2604	\$2717	\$2850	\$2978	\$3110	2.5 Yards
90° Square Corner Bench	Height 17 Width 21 Depth 21 Seat H 17	MONA23	\$2357	\$2470	\$2604	\$2717	\$2850	\$2978	\$3110	1.8 Yards
White Round Laminate Table	Height 20 Dia 24	MONA24	\$1335							
Black Round Laminate Table	Height 20 Dia 24	MONA25	\$1335							
1 Seater Pyramid Pouf	Height 17 Width 19 Depth 19 Seat H 17	MONA26	\$1410	\$1460	\$1512	\$1560	\$1615	\$1665	\$1715	1.3 Yards

Republic

Republic bench / Available in various sizes / On a black painted steel frame / Angled metal black painted legs standard, other colours on request / On nylon glides / Timber frame construction shell / Well padded seat and back / Log effect internal back for extra comfort / Upcharge for two-tone upholstery / Can be upholstered in fabric, vinyl or leather in a wide choice of colours / Ideal for the workplace, all lobby areas and collaboration areas.



Style	DIM	Code	1+COM	2	3	4	5	6	7	L2	COM
Small Bench	Height 34 Width 31 Depth 30 Seat H 17	REP1	\$3940	\$4036	\$4132	\$4312	\$4536	\$4761	\$5207	\$6100	3 Yards
Large Bench	Height 34 Width 52 Depth 30 Seat H 17	REP2	\$6681	\$6826	\$6971	\$7116	\$7261	\$7406	\$7551	\$8576	6 Yards

Standard and Upcharge Features

Angled metal black painted legs standard	On nylon glides
Timber frame construction	Well padded seat and back
Log effect internal back for extra comfort	Can be upholstered in fabric, vinyl or leather
Two Tone Upholstery + \$50 List	

Subway

Subway Lounge Chair And Sofa / Open Ended / Timber Frame Construction / Polished Chrome Round Tube Sled Frame Standard / Fully Upholstered / Designed For Heavy Contract Use / Free Standing Matching Table / Ideal For Lobby Areas, Airport Lounge Areas, Educational Venues And Work Collaboration Areas.



Style	DIM	Code	1+COM	2	3	4	5	6	7	COM
One Seater With Low Back	Height 31 Width 29 Depth 29 Seat H 17	SUB1	\$2905	\$3069	\$3242	\$3493	\$3752	\$4269	\$4764	3.5 Yards
Two Seater With Low Back	Height 31 Width 59 Depth 29 Seat H 17	SUB2	\$3725	\$3932	\$4140	\$4452	\$4760	\$5382	\$6004	5.8 Yards
One Seater High Back	Height 46 Width 32 Depth 31 Seat H 17	SUB4	\$5521	\$5744	\$6001	\$6320	\$6638	\$7358	\$8120	TBD
Two Seater High Back	Height 46 Width 62 Depth 31 Seat H 17	SUB5	\$6856	\$7152	\$7490	\$7911	\$8336	\$9169	\$10240	TBD
Table Oak	Width 29 Depth 29	SUB3	\$1910							

Standard and Upcharge Features

Timber Frame Construction	Fully Upholstered
Polished Chrome Sled Frame	Table Top Oak Finish
Well padded seat and back	Acoustic screens on high back
Two Tone Upholstery + \$50 List	

Vestry Counter Height

Vestry / Range of modular bench stools counter height / Consisting of various lengths of straight units and universal corner units to customise to your individual needs/various layouts / Square metal tubular frame, fully welded for heavy contract use / Black or white painted frame standard / Upcharge for brass polished frame / On nylon glides / Timber frame construction shell / Well padded seat for added comfort / Fully upholstered / Upcharge for vertical stitch lines to back for added detail / In a wide choice of fabric or vinyl / Ideal for the workplace, sports stadiums, hospitality restaurants/bar areas and retail use.



Style	DIM	Code	1+COM	2	3	4	5	6	7	Vertical Stitch Upcharge	COM
Straight Unit 1	Height 42 Width 24 Depth 22 Seat H 26	VESC1	\$4081	\$4243	\$4414	\$4589	\$4776	\$4964	\$5165	+ \$235 List	2.2 Yards
Straight Unit 2	Height 42 Width 40 Depth 22 Seat H 26	VESC2	\$4664	\$4852	\$5048	\$5247	\$5438	\$5675	\$5902	+ \$325 List	3.2 Yards
Straight Unit 3	Height 42 Width 60 Depth 22 Seat H 26	VESC3	\$5441	\$5660	\$5885	\$6120	\$6362	\$6622	\$6885	+ \$385 List	4.4 Yards
Corner Unit	Height 42 Width 22 Depth 22 Seat H 26	VESC4	\$4520	\$4828	\$5031	\$5230	\$5420	\$5630	\$5886	+ \$310 List	3.2 Yards

Standard and Upcharge Features

Timber Frame Construction shell	Fully Upholstered
Black or white painted frame	Fully welded frame
On nylon glides	Well padded seat
Two Tone Upholstery + \$50 List	Brass: Price on application

Vestry Bar Height

Vestry / Range of modular bench stools bar height / Consisting of various lengths of straight units and universal corner units to customise to your individual needs/various layouts / Square metal tubular frame, fully welded for heavy contract use / Black or white painted frame standard / Upcharge for brass polished frame / On nylon glides / Timber frame construction shell / Well padded seat for added comfort / Fully upholstered / Upcharge for vertical stitch lines to back for added detail / In a wide choice of fabric or vinyl / Ideal for the workplace, sports stadiums, hospitality restaurants/bar areas and retail use.



Style	DIM	Code	1+COM	2	3	4	5	6	7	Vertical Stitch Upcharge	COM
Straight Unit 1	Height 46 Width 24 Depth 22 Seat H 30	VESB1	\$4081	\$4243	\$4414	\$4589	\$4776	\$4964	\$5165	+ \$235 List	2.2 Yards
Straight Unit 2	Height 46 Width 40 Depth 22 Seat H 30	VESB2	\$4664	\$4852	\$5048	\$5247	\$5438	\$5675	\$5902	+ \$325 List	3.2 Yards
Straight Unit 3	Height 46 Width 60 Depth 22 Seat H 30	VESB3	\$5441	\$5660	\$5885	\$6120	\$6362	\$6622	\$6885	+ \$385 List	4.4 Yards
Corner Unit	Height 46 Width 22 Depth 22 Seat H 30	VESB4	\$4520	\$4828	\$5031	\$5230	\$5420	\$5630	\$5886	+ \$310 List	3.2 Yards

Standard and Upcharge Features

Timber Frame Construction shell	Fully Upholstered
Black or white painted frame	Fully welded frame
On nylon glides	Well padded seat
Two Tone Upholstery + \$50 List	Brass: Price on application