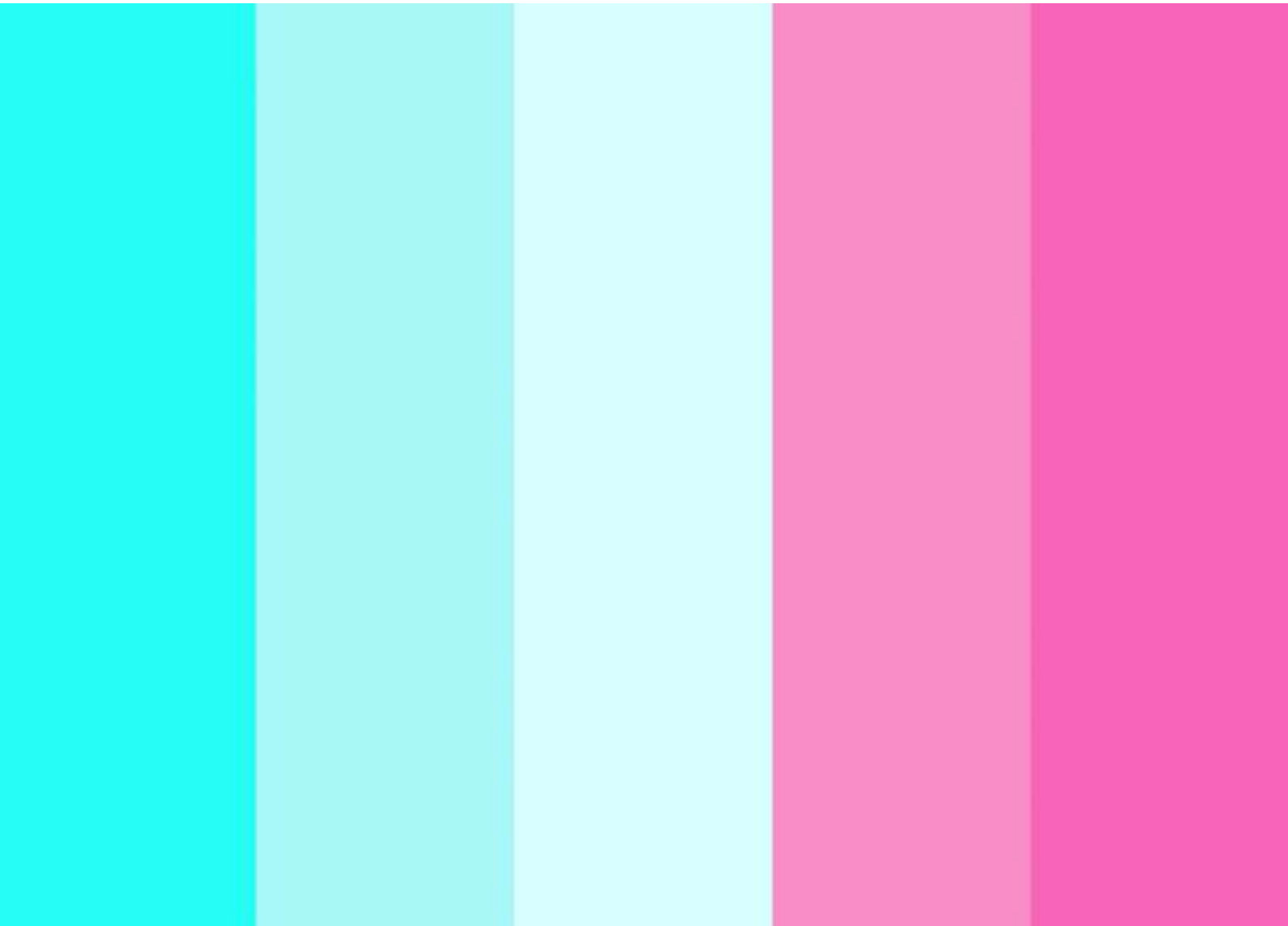


# USA Retail Price List

Benches Collection

May 2024



# Contents

|                                     |         |
|-------------------------------------|---------|
| Biscayne .....                      | Page 3  |
| Carlson .....                       | Page 4  |
| Dario Part 1 .....                  | Page 5  |
| Dario Part 2 .....                  | Page 6  |
| Fremont .....                       | Page 7  |
| Manhattan Benches - High Back ..... | Page 8  |
| Manhattan Benches - Low Back .....  | Page 9  |
| Manhattan Benches - No Back .....   | Page 10 |
| Manhattan Pouf .....                | Page 11 |
| Monarch Part 1 .....                | Page 12 |
| Monarch Part 2 .....                | Page 13 |
| Monarch Part 3 .....                | Page 14 |
| Monarch Part 4 .....                | Page 15 |
| Monarch Part 5 .....                | Page 16 |
| Republic .....                      | Page 17 |
| Subway .....                        | Page 18 |
| Vestry Counter Height .....         | Page 19 |
| Vestry Bar Height .....             | Page 20 |

# Biscayne



Biscayne Collection Of Small And Large Ottomans / Indoor Only / Moulded Polyurethane Shell / On Glides / Light Weight Design / Fully Upholstered / Upcharge For Writing Table / Upcharge For Wireless Charger In Writing Table / Ideal For Breakout Areas, Universities, Hotels And Lobby Areas.

| Style          | DIM                 | Code  | 1+COM  | 2      | 3      | 4      | 5      | 6      | 7      | L2     | COM       |
|----------------|---------------------|-------|--------|--------|--------|--------|--------|--------|--------|--------|-----------|
| Small          | Height 19<br>Dia 29 | BISC1 | \$1827 | \$1856 | \$1887 | \$1908 | \$1951 | \$2085 | \$2320 | \$2665 | 2.5 Yards |
| Medium         | Height 18<br>Dia 42 | BISC5 | \$3140 | \$3285 | \$3430 | \$3570 | \$3861 | \$4145 | \$4429 | \$4060 | 5 Yards   |
| Large          | Height 19<br>Dia 50 | BISC2 | \$4192 | \$4213 | \$4320 | \$4505 | \$4635 | \$4871 | \$5137 | \$6419 | 6 Yards   |
| Round Table    | Height 25<br>Dia 17 | BISC3 | \$1750 |        |        |        |        |        |        |        |           |
| Power And Data |                     | BISC4 | \$685  |        |        |        |        |        |        |        |           |

## Standard and Upcharge Features

|                                 |   |
|---------------------------------|---|
| Moulded Polyurethane Shell      | Fully Upholstered                             |
| Indoor Use Only                 | Round Matching Table Black Or White Standard  |
| On Glides                       | Other Table Painted Colour Finishes Available |
| Two Tone Upholstery + \$50 List | Power And Data + \$685 List                   |

# Carlson

Carlson Matching Table And Benches / Can Be Purchased Individually / Metal Under Frame On Table And Bench For Heavy Contract Use / Metal Frame Powder Coated In White Or Dark Brown Standard / Solid Wood Veneered Top In Natural Oak Or Burnished Oak / Square Edge Profile Top / Ideal For Hospitality Venues, Coffee Shops, Boutique Hotels And Collaboration Areas.



| Style        | DIM                               | Code   | Price  |
|--------------|-----------------------------------|--------|--------|
| <b>Bench</b> | Height 18<br>Width 92<br>Depth 16 | CARLS1 | \$5235 |
| <b>Table</b> | Height 30<br>Width 96<br>Depth 46 | CARLS2 | \$9815 |

## Standard and Upcharge Features

|  |  |
|--|--|
| Metal Steel Frame Braced For Contract Use  | Powder Coated Frame In White Or Dark Brown |
| Natural Oak Or Burnished Oak Finishes Only | Heavy Duty Table Top And Bench Top         |
| Square Edge Profile Top                    |  |
|  |  |
|  |  |
|  |  |

# Dario Part 1

Dario Bench / With Or Without Back / Open Ended Benches / Available in 3 Straight Widths Including Corner and External Corner Units / Can Fit Easily Side By Side For Limitless Configurations To Suit Space / Sprung Seat / Well Padded Foam / Fully Upholstered / Upcharge For Quilted Effect Back / Upcharge For Two Tone Upholstery / Metal Round Polished Legs Standard / Ideal For All Lobby Areas, Educational Environments, Airport Lounge Areas and Retail Environments



| Style                               | DIM  | Code  | 1+COM  | 2      | 3      | 4      | 5      | 6      | 7      | COM |
|-------------------------------------|--|-------|--------|--------|--------|--------|--------|--------|--------|-----|
| <b>One Seater Bench With Back</b>   | Height 32<br>Width 24<br>Depth 28<br>Seat H 18 | DARI1 | \$2965 | \$3050 | \$3145 | \$3255 | \$3545 | \$4005 | \$4460 | TBC |
| <b>Two Seater Bench With Back</b>   | Height 32<br>Width 48<br>Depth 28<br>Seat H 18 | DARI2 | \$4847 | \$5001 | \$5154 | \$5306 | \$5460 | \$5612 | \$5766 | TBC |
| <b>Three Seater Bench With Back</b> | Height 32<br>Width 71<br>Depth 28<br>Seat H 18 | DARI3 | \$6710 | \$6928 | \$7145 | \$7360 | \$7580 | \$7801 | \$8017 | TBC |
| <b>Corner Unit</b>                  | Height 32<br>Width 30<br>Depth 30<br>Seat H 18 | DARI4 | \$4842 | \$5001 | \$5154 | \$4306 | \$5460 | \$5612 | \$5766 | TBC |

## Standard and Upcharge Features

|                                       |  |
|---------------------------------------|--|
| Timber Frame Construction             | Well Padded Seat And Back              |
| Polished Chrome Metal Legs            | Fully Upholstered                      |
|                                       |  |
|                                       |  |
| Two Tone Upholstery + \$50 List       | Quilted Stitching One Seater + \$250   |
| Quilted Stitching Two Seater + \$350  | Quilted Stitching Three Seater + \$400 |
| Quilted Stitching Corner Unit + \$350 |  |

# Dario Part 2

Dario Bench / With Or Without Back / Open Ended Benches / Available in 3 Straight Widths Including Corner and External Corner Units / Can Fit Easily Side By Side For Limitless Configurations To Suit Space / Sprung Seat / Well Padded Foam / Fully Upholstered / Upcharge For Quilted Effect Back / Upcharge For Two Tone Upholstery / Metal Round Polished Legs Standard / Ideal For All Lobby Areas, Educational Environments, Airport Lounge Areas and Retail Environments



| Style                             | DIM  | Code  | 1+COM  | 2      | 3      | 4      | 5      | 6      | 7      | COM |
|-----------------------------------|--|-------|--------|--------|--------|--------|--------|--------|--------|-----|
| <b>One Seater Bench No Back</b>   | Height 18<br>Width 24<br>Depth 28<br>Seat H 18 | DARI5 | \$1840 | \$1895 | \$1955 | \$2020 | \$2120 | \$2240 | \$2470 | TBC |
| <b>Two Seater Bench No Back</b>   | Height 18<br>Width 48<br>Depth 28<br>Seat H 18 | DARI6 | \$3890 | \$4075 | \$4175 | \$4355 | \$4665 | \$4750 | \$5001 | TBC |
| <b>Three Seater Bench No Back</b> | Height 18<br>Width 71<br>Depth 28<br>Seat H 18 | DARI7 | \$5195 | \$5365 | \$5555 | \$5780 | \$6090 | \$6275 | \$6595 | TBC |

## Standard and Upcharge Features

|                                 |                           |
|---------------------------------|---------------------------|
| Timber Frame Construction       | Well Padded Seat And Back |
| Polished Chrome Metal Legs      | Fully Upholstered         |
|                                 |                           |
|                                 |                           |
| Two Tone Upholstery + \$50 List |                           |
|                                 |                           |

# Fremont



Fremont Is A Collection Of Small And Large Ottomans In Soft Shapes / Used Indoor And Outdoor / Moulded Polyurethane / On Glides / Light Weight Design / Fully Upholstered / Ideal For Breakout Areas, Universities, Hotels And Lobby Areas

| Style                   | DIM                 | Code | 1+COM  | 2      | 3      | 4      | 5      | 6      | 7      | L2     | COM       |
|-------------------------|---------------------|------|--------|--------|--------|--------|--------|--------|--------|--------|-----------|
| <b>Small Pouf</b>       | Height 20<br>Dia 18 | FR1  | \$1410 | \$1496 | \$1571 | \$1643 | \$1753 | \$1865 | \$2024 | \$2204 | 1.9 Yards |
| <b>Medium Pouf</b>      | Height 17<br>Dia 19 | FR2  | \$1410 | \$1496 | \$1571 | \$1643 | \$1753 | \$1865 | \$2024 | \$2204 | 1.9 Yards |
| <b>Large Pouf</b>       | Height 17<br>Dia 33 | FR3  | \$2951 | \$3139 | \$3300 | \$3454 | \$3690 | \$3930 | \$4271 | \$4657 | 2.8 Yards |
| <b>Extra Large Pouf</b> | Height 17<br>Dia 51 | FR4  | \$3605 | \$3739 | \$3870 | \$4001 | \$4130 | \$4262 | \$4592 | \$4786 | 4.4 Yards |

## Standard and Upcharge Features

|                                 |                            |
|---------------------------------|----------------------------|
| Fully Upholstered               | Moulded Polyurethane Frame |
| On Nylon Glides                 | None Removable Cover       |
|                                 |                            |
|                                 |                            |
| Two Tone Upholstery + \$50 List |                            |
|                                 |                            |

# Manhattan Benches - High Back



Manhattan Benches / Available In 3 Widths / With Screen Fixed To Back / Used Singular Stand Alone Or Back To Back With Bench Only / Repeated Configuration Options For Open Space Areas / Timber Frame Construction / Metal Frame Base Painted Black Or White Only / Well Padded Seat / Upcharge USB Socket In Base / Ideal For All Lobby Areas, Car Dealerships And General Waiting

| Style                         | DIM  | Code  | 3+COM  | 4      | 5      | 6      | 7       | COM        |
|-------------------------------|--|-------|--------|--------|--------|--------|---------|------------|
| <b>Small Bench High Back</b>  | Height 57<br>Width 31<br>Depth 29<br>Seat H 17 | MAT10 | \$5519 | \$5629 | \$5741 | \$5959 | \$6184  | 5.5 Yards  |
| <b>Medium Bench High Back</b> | Height 57<br>Width 47<br>Depth 29<br>Seat H 17 | MAT11 | \$6137 | \$6247 | \$6569 | \$7223 | \$8527  | 7 Yards    |
| <b>Large Bench High Back</b>  | Height 57<br>Width 63<br>Depth 29<br>Seat H 17 | MAT12 | \$7622 | \$7960 | \$8391 | \$9248 | \$10966 | 10.1 Yards |

## Standard and Upcharge Features

|                                 |                            |
|---------------------------------|----------------------------|
| Timber Frame                    | Fully Upholstered          |
| Sprung Seat                     | White And Black Frame Only |
|                                 |                            |
| Two Tone Upholstery + \$50 List | USB Electrics + \$320 List |
|                                 |                            |



# Manhattan Benches - Low Back



Manhattan Benches / Available In 3 Widths / With Screen Fixed To Back / Used Singular Stand Alone Or Back To Back With Bench Only / Repeated Configuration Options For Open Space Areas / Timber Frame Construction / Metal Frame Base Painted Black Or White Only / Well Padded Seat / Upcharge USB Socket In Base / Ideal For All Lobby Areas, Car Dealerships And General Waiting Areas.

| Style                        | DIM  | Code | 3+COM  | 4      | 5      | 6      | 7      | COM       |
|------------------------------|--|------|--------|--------|--------|--------|--------|-----------|
| <b>Small Bench Low Back</b>  | Height 30<br>Width 31<br>Depth 29<br>Seat H 17 | MAT4 | \$3412 | \$3522 | \$3632 | \$3852 | \$4347 | 2.4 Yards |
| <b>Medium Bench Low Back</b> | Height 30<br>Width 47<br>Depth 29<br>Seat H 17 | MAT8 | \$4378 | \$4542 | \$4754 | \$5781 | \$6034 | 3.2 Yards |
| <b>Large Bench Low Back</b>  | Height 30<br>Width 63<br>Depth 29<br>Seat H 17 | MAT9 | \$5606 | \$5802 | \$6156 | \$6705 | \$7805 | 4.1 Yards |

## Standard and Upcharge Features

|                                 |                            |
|---------------------------------|----------------------------|
| Timber Frame                    | Fully Upholstered          |
| Sprung Seat                     | White And Black Frame Only |
|                                 |                            |
| Two Tone Upholstery + \$50 List | USB Electrics + \$320 List |
|                                 |                            |

# Manhattan Benches - No Back



Manhattan Benches / Available In 3 Widths / With Screen Fixed To Back / Used Singular Stand Alone Or Back To Back With Bench Only / Repeated Configuration Options For Open Space Areas / Timber Frame Construction / Metal Frame Base Painted Black Or White Only / Well Padded Seat / Upcharge USB Socket In Base / Ideal For All Lobby Areas, Car Dealerships And General Waiting

| Style                       | DIM                               | Code | 3+COM  | 4      | 5      | 6      | 7      | COM       |
|-----------------------------|-----------------------------------|------|--------|--------|--------|--------|--------|-----------|
| <b>Small Bench No Back</b>  | Height 17<br>Width 31<br>Depth 29 | MAT1 | \$2316 | \$2436 | \$2557 | \$2797 | \$3279 | 2.4 Yards |
| <b>Medium Bench No Back</b> | Height 17<br>Width 47<br>Depth 29 | MAT2 | \$2175 | \$3327 | \$3482 | \$3792 | \$4417 | 3.2 Yards |
| <b>Large Bench No Back</b>  | Height 17<br>Width 63<br>Depth 29 | MAT3 | \$4026 | \$4221 | \$4419 | \$4810 | \$5594 | 4.1 Yards |

## Standard and Upcharge Features

|                                 |                            |
|---------------------------------|----------------------------|
| Timber Frame                    | Fully Upholstered          |
| Sprung Seat                     | White And Black Frame Only |
|                                 |                            |
| Two Tone Upholstery + \$50 List | USB Electrics + \$320 List |
|                                 |                            |

# Manhattan Pouf



Manhattan Table Pouf / Available As Square Or Rectangular / Timber Frame Construction / 4 Leg Metal Base / Painted Black Or White Only / Metal Frame Welded For Added Strength / Suitable For Contract Use / Well Padded / Fully Upholstered / Ideal For Lobby Areas, Social Workplace Areas And Educational Environments.

| Style                   | DIM  | Code | 3+COM  | 4      | 5      | 6      | 7      | COM       |
|-------------------------|--|------|--------|--------|--------|--------|--------|-----------|
| <b>Square Pouf</b>      | Height 33<br>Width 20<br>Depth 22<br>Seat H 17 | MAT6 | \$1828 | \$1936 | \$2043 | \$2148 | \$2254 | 1.6 Yards |
| <b>Rectangular Pouf</b> | Height 41<br>Width 18<br>Depth 20<br>Seat H 30 | MAT5 | \$2632 | \$2740 | \$2863 | \$3018 | \$3792 | 1.8 Yards |

## Standard and Upcharge Features

|                                 |                            |
|---------------------------------|----------------------------|
| Timber Frame                    | Fully Upholstered          |
| Sprung Seat                     | White And Black Frame Only |
|                                 |                            |
|                                 |                            |
| Two Tone Upholstery + \$50 List |                            |
|                                 |                            |

# Monarch Part 1



## Low Back Straight Units And End Arms

Monarch Low Back Straight Units / With Or Without Sides / 1 Or 2 Seater / Side By Side With Or Without Back To Create Straight Or Curved Internal And External Segments / Internal And External Modules And Combinations To Create Unlimited Layouts / Matching 1 Seater Pyramid Pouf And Metal Rod Tables / Ideal For Hospitality Venues, Lobby Areas And Educational Environments.

| Style                               | DIM  | Code  | 1+COM  | 2      | 3      | 4      | 5      | 6      | 7      | COM       |
|-------------------------------------|--|-------|--------|--------|--------|--------|--------|--------|--------|-----------|
| <b>1 Seater Low Back Open Ended</b> | Height 29<br>Width 32<br>Depth 24<br>Seat H 17 | MONA1 | \$2341 | \$2430 | \$2470 | \$2657 | \$2739 | \$2819 | \$2921 | 4.5 Yards |
| <b>2 Seater Low Back Open Ended</b> | Height 29<br>Width 53<br>Depth 24<br>Seat H 17 | MONA2 | \$3796 | \$3987 | \$4247 | \$4505 | \$4770 | \$5028 | \$5288 | 5.6 Yards |
| <b>Corner Unit With Low Back</b>    | Height 29<br>Width 24<br>Depth 24<br>Seat H 17 | MONA3 | \$3156 | \$3281 | \$3413 | \$3550 | \$3693 | \$3839 | \$3994 | 3.7 Yards |
| <b>Left Hand Arm</b>                |  | MONA4 | \$450  |        |        |        |        |        |        | 1.9 Yards |
| <b>Right Hand Arm</b>               |  | MONA5 | \$450  |        |        |        |        |        |        | 1.9 Yards |

## Standard and Upcharge Features

|  |   |
|--|---|
| Timber Frame Construction              | Sprung Seat                                 |
| Fully Upholstered                      | Table - White Frame And White Laminate ONLY |
| Configured For Various Layouts         | Matching 1 Seater Pyramid Pouf - POA        |
| Left / Right Arms Add Price On Per Arm |   |
| Two Tone Upholstery + \$50 List        | Work Shelf On 2 Seater With High Back:      |
| USB + \$399 List                       | White Painted Metal \$1080                  |
| USB With Power + \$685 List            |   |

# Monarch Part 2



## Low Back

### 30 Degree Internal And External Units

### 90 Degree Internal And External Units

| Style                                   | DIM  | Code  | 1+COM  | 2      | 3      | 4      | 5      | 6      | 7      | COM       |
|---|--|-------|--------|--------|--------|--------|--------|--------|--------|-----------|
| <b>Internal Unit 30 Degree Low Back</b> | Height 29<br>Width 34<br>Depth 25<br>Seat H 17 | MONA6 | \$1778 | \$1891 | \$2017 | \$2128 | \$2252 | \$2380 | \$2506 | 4.2 Yards |
| <b>External Unit 30 Degree Low Back</b> | Height 29<br>Width 19<br>Depth 25<br>Seat H 17 | MONA7 | \$1989 | \$2101 | \$2227 | \$2338 | \$2466 | \$2592 | \$2721 | 4 Yards   |
| <b>Internal 90 Degree Low Back</b>      | Height 29<br>Width 62<br>Depth 25<br>Seat H 17 | MONA8 | \$5957 | \$6192 | \$6459 | \$6791 | \$7124 | \$7457 | \$7791 | 5.8 Yards |
| <b>External 90 Degree Low Back</b>      | Height 29<br>Width 23<br>Depth 25<br>Seat H 17 | MONA9 | \$5957 | \$6192 | \$6459 | \$6791 | \$7124 | \$7457 | \$7791 | 5.8 Yards |

# Monarch Part 3

## High Back Straight Units And End Arms



Monarch High Back Straight Units / With Or Without Sides / 1 Or 2 Seater / Side By Side With Or Without Back To Create Straight Or Curved Internal And External Segments / Internal And External Modules And Combinations To Create Unlimited Layouts / Matching 1 Seater Pyramid Pouf And Metal Rod Tables / Ideal For Hospitality Venues, Lobby Areas And Educational Environments.

| Style                          | DIM  | Code   | 1+COM  | 2      | 3      | 4      | 5      | 6      | 7      | COM       |
|--------------------------------|--|--------|--------|--------|--------|--------|--------|--------|--------|-----------|
| <b>1 Seater High Back Open</b> | Height 44<br>Width 32<br>Depth 24<br>Seat H 17 | MONA10 | \$3370 | \$3476 | \$3577 | \$3747 | \$3963 | \$4179 | \$4396 | 4 Yards   |
| <b>2 Seater High Back Open</b> | Height 44<br>Width 53<br>Depth 24<br>Seat H 17 | MONA11 | \$5614 | \$5851 | \$6089 | \$6325 | \$6561 | \$6947 | \$7097 | 6.9 Yards |
| <b>Corner Unit With High</b>   | Height 44<br>Width 24<br>Depth 24<br>Seat H 17 | MONA12 | \$5132 | \$5329 | \$5545 | \$5856 | \$5999 | \$6233 | \$6486 | 4.1 Yards |
| <b>Left Hand Arm</b>           |  | MONA13 | \$900  |        |        |        |        |        |        | 2.7 Yards |
| <b>Right Hand Arm</b>          |  | MONA14 | \$900  |        |        |        |        |        |        | 2.7 Yards |

### Standard and Upcharge Features

|  |   |
|--|---|
| Timber Frame Construction              | Sprung Seat                                 |
| Fully Upholstered                      | Table - White Frame And White Laminate ONLY |
| Configured For Various Layouts         | Matching 1 Seater Pyramid Pouf - POA        |
| Left / Right Arms Add Price On Per Arm |   |
| Two Tone Upholstery + \$50 List        | Work Shelf On 2 Seater With High Back:      |
| USB + \$399 List                       | White Painted Metal \$1080                  |
| USB With Power + \$685 List            |   |

# Monarch Part 4

## High Back

### 30 Degree Internal And External Units

### 90 Degree Internal And External Units



| Style                               | DIM  | Code   | 1+COM  | 2      | 3      | 4      | 5      | 6      | 7       | COM       |
|-------------------------------------|--|--------|--------|--------|--------|--------|--------|--------|---------|-----------|
| <b>Internal Unit 30 Degree High</b> | Height 44<br>Width 34<br>Depth 25<br>Seat H 17 | MONA15 | \$3504 | \$3795 | \$3995 | \$4185 | \$4390 | \$4606 | \$4820  | 5 Yards   |
| <b>External Unit 30 Degree High</b> | Height 44<br>Width 19<br>Depth 25<br>Seat H 17 | MONA16 | \$3818 | \$4005 | \$4205 | \$4395 | \$4604 | \$4818 | \$5035  | 5 Yards   |
| <b>Internal 90 Degree High Back</b> | Height 44<br>Width 62<br>Depth 25<br>Seat H 17 | MONA17 | \$7796 | \$8136 | \$8523 | \$9008 | \$9494 | \$9978 | \$10462 | 9.9 Yards |
| <b>External 90 Degree High Back</b> | Height 44<br>Width 23<br>Depth 25<br>Seat H 17 | MONA18 | \$7796 | \$8136 | \$8523 | \$9008 | \$9494 | \$9978 | \$10462 | 9.9 Yards |

# Monarch Part 5

## Internal And External Segments

### Benches And Tables



| Style                             | DIM  | Code   | 1+COM  | 2      | 3      | 4      | 5      | 6      | 7      | COM       |
|-----------------------------------|--|--------|--------|--------|--------|--------|--------|--------|--------|-----------|
| <b>1 Seater Straight Bench</b>    | Height 17<br>Width 31<br>Depth 21<br>Seat H 17 | MONA19 | \$1869 | \$2069 | \$2264 | \$2460 | \$2656 | \$2852 | \$3045 | 1.8 Yards |
| <b>2 Seater Straight Bench</b>    | Height 17<br>Width 53<br>Depth 21<br>Seat H 17 | MONA20 | \$2616 | \$2814 | \$3010 | \$3207 | \$3405 | \$3598 | \$3795 | 2.5 Yards |
| <b>30° Curved Bench</b>           | Height 17<br>Width 32<br>Depth 21<br>Seat H 17 | MONA21 | \$1728 | \$1842 | \$1972 | \$2087 | \$2220 | \$2351 | \$2482 | 1.8 Yards |
| <b>90° Curved Bench</b>           | Height 17<br>Width 56<br>Depth 21<br>Seat H 17 | MONA22 | \$2357 | \$2470 | \$2604 | \$2717 | \$2850 | \$2978 | \$3110 | 2.5 Yards |
| <b>90° Square Corner Bench</b>    | Height 17<br>Width 21<br>Depth 21<br>Seat H 17 | MONA23 | \$2357 | \$2470 | \$2604 | \$2717 | \$2850 | \$2978 | \$3110 | 1.8 Yards |
| <b>White Round Laminate Table</b> | Height 20<br>Dia 24                            | MONA24 | \$1335 |        |        |        |        |        |        |           |
| <b>Black Round Laminate Table</b> | Height 20<br>Dia 24                            | MONA25 | \$1335 |        |        |        |        |        |        |           |
| <b>1 Seater Pyramid Pouf</b>      | Height 17<br>Width 19<br>Depth 19<br>Seat H 17 | MONA26 | \$1410 | \$1460 | \$1512 | \$1560 | \$1615 | \$1665 | \$1715 | 1.3 Yards |



# Republic

Republic bench / Available in various sizes / On a black painted steel frame / Angled metal black painted legs standard, other colours on request / On nylon glides / Timber frame construction shell / Well padded seat and back / Log effect internal back for extra comfort / Upcharge for two-tone upholstery / Can be upholstered in fabric, vinyl or leather in a wide choice of colours / Ideal for the workplace, all lobby areas and collaboration areas.



| Style              | DIM  | Code | 1+COM  | 2      | 3      | 4      | 5      | 6      | 7      | L2     | COM     |
|--------------------|--|------|--------|--------|--------|--------|--------|--------|--------|--------|---------|
| <b>Small Bench</b> | Height 34<br>Width 31<br>Depth 30<br>Seat H 17 | REP1 | \$3940 | \$4036 | \$4132 | \$4312 | \$4536 | \$4761 | \$5207 | \$6100 | 3 Yards |
| <b>Large Bench</b> | Height 34<br>Width 52<br>Depth 30<br>Seat H 17 | REP2 | \$6681 | \$6826 | \$6971 | \$7116 | \$7261 | \$7406 | \$7551 | \$8576 | 6 Yards |

## Standard and Upcharge Features

|  |  |
|--|--|
| Angled metal black painted legs standard   | On nylon glides                                |
| Timber frame construction                  | Well padded seat and back                      |
| Log effect internal back for extra comfort | Can be upholstered in fabric, vinyl or leather |
| Two Tone Upholstery + \$50 List            |  |
|  |  |

# Subway

Subway Lounge Chair And Sofa / Open Ended / Timber Frame Construction / Polished Chrome Round Tube Sled Frame Standard / Fully Upholstered / Designed For Heavy Contract Use / Free Standing Matching Table / Ideal For Lobby Areas, Airport Lounge Areas, Educational Venues And Work Collaboration Areas.



| Style                           | DIM  | Code | 1+COM  | 2      | 3      | 4      | 5      | 6      | 7       | COM       |
|---------------------------------|--|------|--------|--------|--------|--------|--------|--------|---------|-----------|
| <b>One Seater With Low Back</b> | Height 31<br>Width 29<br>Depth 29<br>Seat H 17 | SUB1 | \$2905 | \$3069 | \$3242 | \$3493 | \$3752 | \$4269 | \$4764  | 3.5 Yards |
| <b>Two Seater With Low Back</b> | Height 31<br>Width 59<br>Depth 29<br>Seat H 17 | SUB2 | \$3725 | \$3932 | \$4140 | \$4452 | \$4760 | \$5382 | \$6004  | 5.8 Yards |
| <b>One Seater High Back</b>     | Height 46<br>Width 32<br>Depth 31<br>Seat H 17 | SUB4 | \$5521 | \$5744 | \$6001 | \$6320 | \$6638 | \$7358 | \$8120  | TBD       |
| <b>Two Seater High Back</b>     | Height 46<br>Width 62<br>Depth 31<br>Seat H 17 | SUB5 | \$6856 | \$7152 | \$7490 | \$7911 | \$8336 | \$9169 | \$10240 | TBD       |
| <b>Table Oak</b>                | Width 29<br>Depth 29                           | SUB3 | \$1910 |        |        |        |        |        |         |           |

## Standard and Upcharge Features

|                                 |                               |
|---------------------------------|-------------------------------|
| Timber Frame Construction       | Fully Upholstered             |
| Polished Chrome Sled Frame      | Table Top Oak Finish          |
| Well padded seat and back       | Acoustic screens on high back |
|                                 |                               |
| Two Tone Upholstery + \$50 List |                               |
|                                 |                               |

# Vestry Counter Height

Vestry / Range of modular bench stools counter height / Consisting of various lengths of straight units and universal corner units to customise to your individual needs/various layouts / Square metal tubular frame, fully welded for heavy contract use / Black or white painted frame standard / Upcharge for brass polished frame / On nylon glides / Timber frame construction shell / Well padded seat for added comfort / Fully upholstered / Upcharge for vertical stitch lines to back for added detail / In a wide choice of fabric or vinyl / Ideal for the workplace, sports stadiums, hospitality restaurants/bar areas and retail use.



| Style                  | DIM  | Code  | 1+COM  | 2      | 3      | 4      | 5      | 6      | 7      | Vertical Stitch Upcharge | COM       |
|------------------------|--|-------|--------|--------|--------|--------|--------|--------|--------|--------------------------|-----------|
| <b>Straight Unit 1</b> | Height 42<br>Width 24<br>Depth 22<br>Seat H 26 | VESC1 | \$4081 | \$4243 | \$4414 | \$4589 | \$4776 | \$4964 | \$5165 | + \$235 List             | 2.2 Yards |
| <b>Straight Unit 2</b> | Height 42<br>Width 40<br>Depth 22<br>Seat H 26 | VESC2 | \$4664 | \$4852 | \$5048 | \$5247 | \$5438 | \$5675 | \$5902 | + \$325 List             | 3.2 Yards |
| <b>Straight Unit 3</b> | Height 42<br>Width 60<br>Depth 22<br>Seat H 26 | VESC3 | \$5441 | \$5660 | \$5885 | \$6120 | \$6362 | \$6622 | \$6885 | + \$385 List             | 4.4 Yards |
| <b>Corner Unit</b>     | Height 42<br>Width 22<br>Depth 22<br>Seat H 26 | VESC4 | \$4520 | \$4828 | \$5031 | \$5230 | \$5420 | \$5630 | \$5886 | + \$310 List             | 3.2 Yards |

## Standard and Upcharge Features

|                                 |                             |
|---------------------------------|-----------------------------|
| Timber Frame Construction shell | Fully Upholstered           |
| Black or white painted frame    | Fully welded frame          |
| On nylon glides                 | Well padded seat            |
| Two Tone Upholstery + \$50 List | Brass: Price on application |

# Vestry Bar Height

Vestry / Range of modular bench stools bar height / Consisting of various lengths of straight units and universal corner units to customise to your individual needs/various layouts / Square metal tubular frame, fully welded for heavy contract use / Black or white painted frame standard / Upcharge for brass polished frame / On nylon glides / Timber frame construction shell / Well padded seat for added comfort / Fully upholstered / Upcharge for vertical stitch lines to back for added detail / In a wide choice of fabric or vinyl / Ideal for the workplace, sports stadiums, hospitality restaurants/bar areas and retail use.



| Style                  | DIM  | Code  | 1+COM  | 2      | 3      | 4      | 5      | 6      | 7      | Vertical Stitch Upcharge | COM       |
|------------------------|--|-------|--------|--------|--------|--------|--------|--------|--------|--------------------------|-----------|
| <b>Straight Unit 1</b> | Height 46<br>Width 24<br>Depth 22<br>Seat H 30 | VESB1 | \$4081 | \$4243 | \$4414 | \$4589 | \$4776 | \$4964 | \$5165 | + \$235 List             | 2.2 Yards |
| <b>Straight Unit 2</b> | Height 46<br>Width 40<br>Depth 22<br>Seat H 30 | VESB2 | \$4664 | \$4852 | \$5048 | \$5247 | \$5438 | \$5675 | \$5902 | + \$325 List             | 3.2 Yards |
| <b>Straight Unit 3</b> | Height 46<br>Width 60<br>Depth 22<br>Seat H 30 | VESB3 | \$5441 | \$5660 | \$5885 | \$6120 | \$6362 | \$6622 | \$6885 | + \$385 List             | 4.4 Yards |
| <b>Corner Unit</b>     | Height 46<br>Width 22<br>Depth 22<br>Seat H 30 | VESB4 | \$4520 | \$4828 | \$5031 | \$5230 | \$5420 | \$5630 | \$5886 | + \$310 List             | 3.2 Yards |

## Standard and Upcharge Features

|                                 |                             |
|---------------------------------|-----------------------------|
| Timber Frame Construction shell | Fully Upholstered           |
| Black or white painted frame    | Fully welded frame          |
| On nylon glides                 | Well padded seat            |
| Two Tone Upholstery + \$50 List | Brass: Price on application |